

POZNAŃ SUPERCOMPUTING AND NETWORKING CENTER



FLOSS-based municipal services in the City of Poznań

Bartosz Lewandowski

FLOSSa Conference

November 9th, 2010

Grenoble, France

The logo for FLOSSa, with 'floss' in a bold, lowercase, sans-serif font and 'a' in a smaller, lowercase, italicized font.

Outline

- Multimedia City Guide
- e-Services for citizens&businesses
- Open access
- FLOSS based services
- Open gov/gov 2.0
- Conclusion

Multimedia City Guide

- Multimedia City Guide, <http://www.poznan.pl>
- The biggest information portal of the city of Poznań
- The platform of e-Government services for citizens and businesses
- Developed since 1998 in co-operation with the Municipal Office
- PSNC is responsible for the technological part
- Local government, its departments and co-operating institutions are responsible for the content of the Portal and its structure
- The information platform of the Town Hall, its departments and units
 - 1000+ editors

e-Services for citizens&businesses

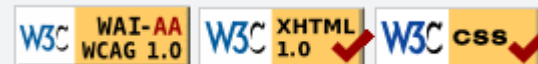
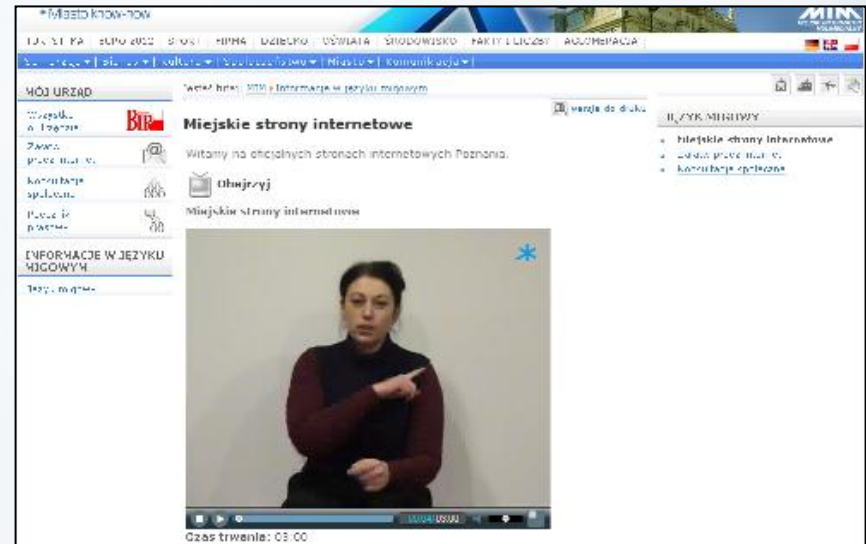
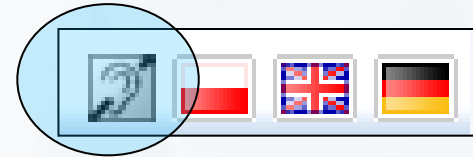
- „Pragmatic approach”
- Critical for citizens
- For mass audience
- Improving procedures&processes
 - Identifying weak points
 - Re-engineering of processes
- Data consistency, avoiding redundancy
- Learning lessons from administration staff working in „traditional” channels

Open access (1)

- Multi-channel access
 - Internet (www),
 - Mobile users (WAP),
 - CATV subscribers (Set Top Box)

Open access (2)

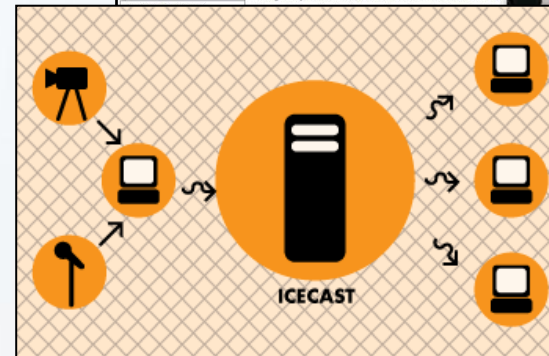
- Information level
 - W3C standards & guidelines regarding information presentation (XHTML), the structure and the content separation (CSS)
 - W3C standards & guidelines regarding information accessibility (WAI, WCAG)
 - Access for blind people (using their screen readers)
 - Videoclips presenting selected portal elements in sign language



Some examples of FLOSS-based services

Broadcasting

- Online transmission from City Council sessions
 - Streaming
 - OSS tools: OGG Vorbis, OGG Theora, icecast
- Audio archive from City Council sessions
 - mp3 format
 - Semantic description according to sessions agendas



Multimedia clips

Audio: mp3

Video: flash video (flv)

Tools:

server:

ffmpeg,

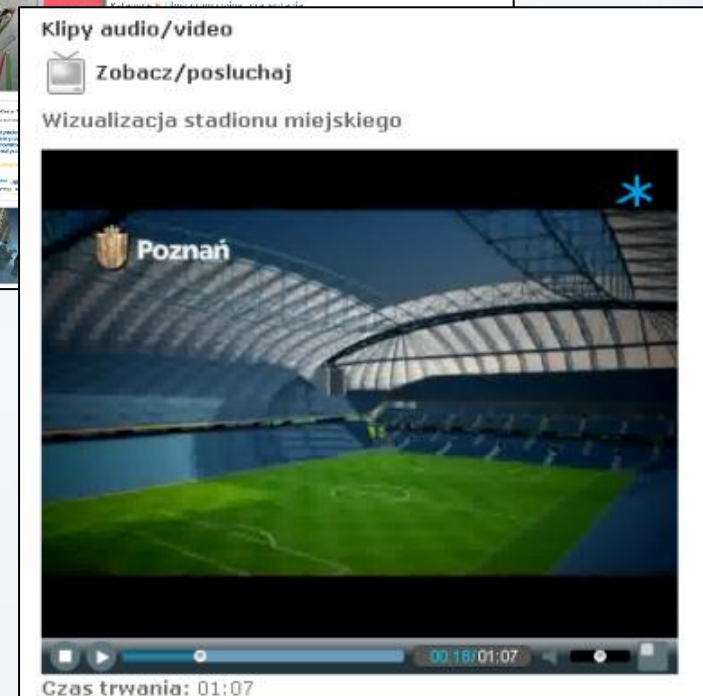
flvtool2 (metadata!)

client:

FlowPlayer (flv),

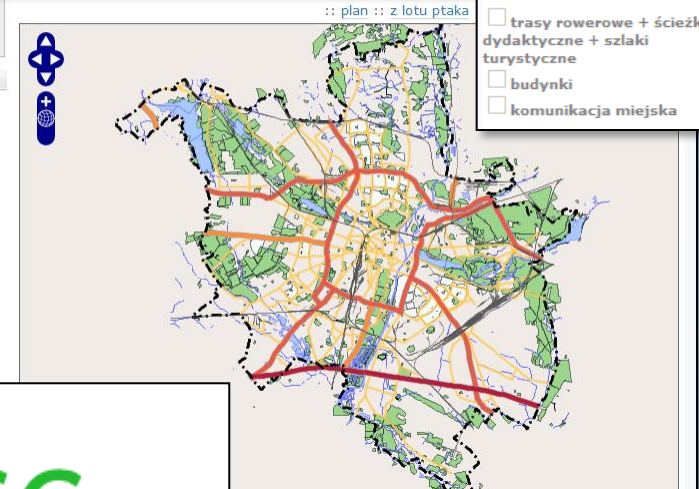
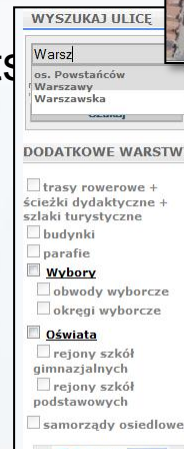
XSPF Web Music Player
(mp3)

<http://www.poznan.pl/wideo>



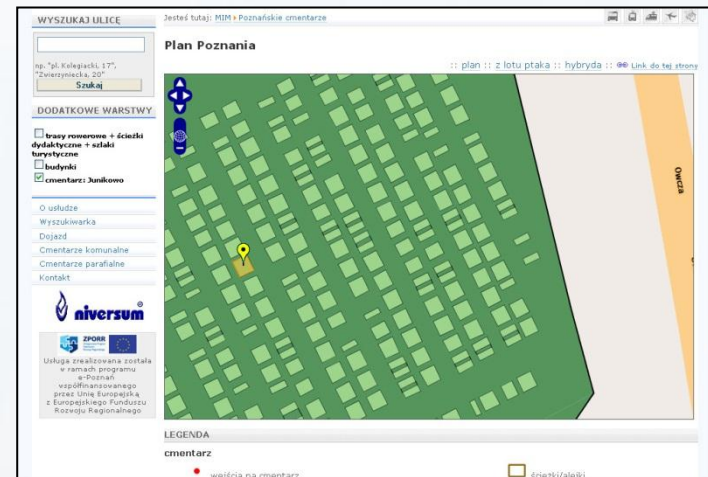
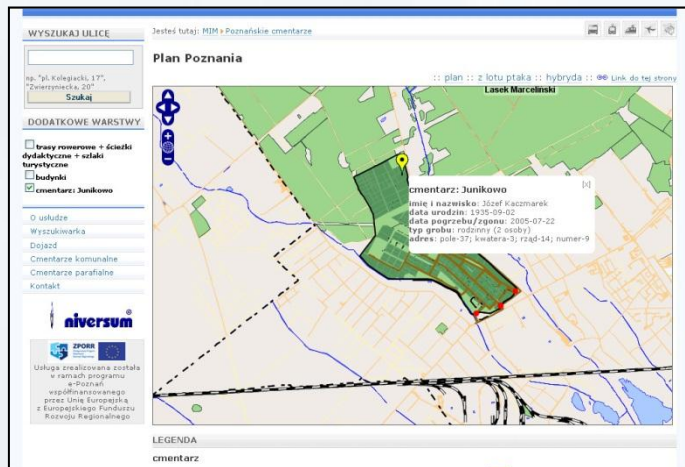
City map

- Based on city Spatial Information System
- Modules, layers
 - Ortophoto
 - Search streets & address points
- FLOSS tools
 - Posgres/PostGIS
 - Geoserver
 - Tilecache
 - OpenLayers
- Foundation for complex services



City map as a platform

- Interactive maps of cemeteries in Poznań
 - Based on the city map
 - Open platform for any cemetery in the city



Public Internet Access Points

- Preventing the “digital divide”
- Computer education
- Increasing accessibility to e-services and municipal information
- Based on Open Source platform
 - Fedora Linux
 - Squid (content filtering)



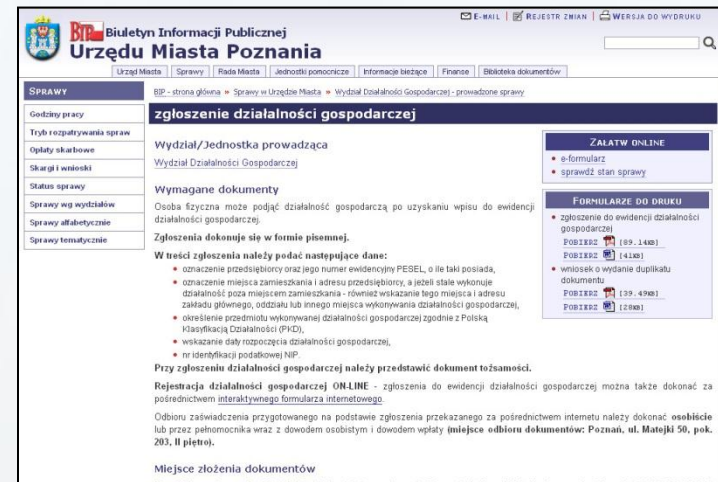
Open gov/gov 2.0

Open government

- By Tim O'Reilly – *government as a platform*
 - *Open Standards Spark Innovation and Growth*
 - *Build a Simple System and Let It Evolve*
 - *Design for Participation*
- Open data
- Web 2.0 tools empowering gov staff
 - *“It’s not a case of pushing information out, it’s not about just supply; it is about demand”* Guy Cranswick, IBRS

Open data

- Reference data sets
 - EU Directive „re-use”
 - „Public information bulletin” (BIP in Polish)
 - City map
 - Open standards!

Citizens participation

- Submitting information for Municipal Police, making use of city map

The image shows a web portal interface for reporting to the Municipal Police. The main window is titled "INTERWENCJE DO STRAŻY MIEJSKIEJ" and is divided into two panes. The left pane, labeled "Ekran 1 z 2", contains a form with the following sections:

- 1. KATEGORIA ZGŁOSZENIA:** A dropdown menu with the text "(wybierz)".
- 2. ZGŁOSZENIE:**
 - Temat zgłoszenia:** A text input field.
 - Treść zgłoszenia:** A larger text input area.
- 3. WSKAŻ NA PLANIE:** A section with instructions: "Jeżeli chcesz wskazać miejsce na planie, które związane jest z tym zgłoszeniem przycisk." Below the instructions is a button labeled "Wskaż na planie".
- 4. DODAJ ZAŁĄCZNIKI:** A section with instructions: "Jeżeli chcesz dodać załączniki do zgłoszenia, wybierz poniższy przycisk." Below the instructions is a button labeled "Dodaj załączniki".
- 5. DANE KONTAKTOWE:** Fields for "Imię" and "Nazwisko".

The right pane, labeled "Ekran - wskaż na planie", is titled "3. WSKAŻ NA PLANIE" and contains a map of a city area. The map shows streets, a river, and a park. A red diamond marker is placed on the map, indicating a specific location. Below the map are navigation controls: "plan :: z lotu ptaka :: hybryda ::" and a "Dalej >>" button. A large red arrow points from the "Wskaż na planie" button in the left pane to the map in the right pane.

Toward open platform

- Re-engineering of services needed (*design for participation*)
 - Map of cemeteries
 - Portal databases (objects)
 - Mobile applications (tourists guides)

Thank you!

bartekel@man.poznan.pl